

Making a Symmetrical Drawing

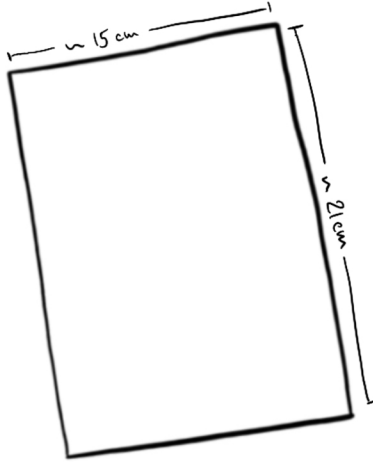
An investigation into Bilateral Symmetry

You will need:

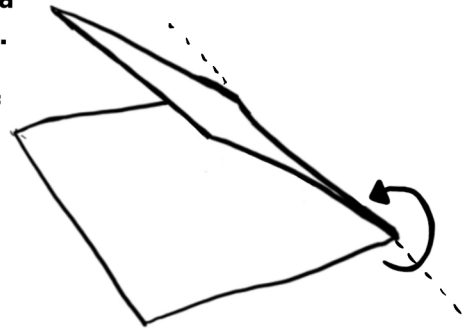
- Paint
- Paintbrush
- Paper

- ① Find a blank sheet of paper.

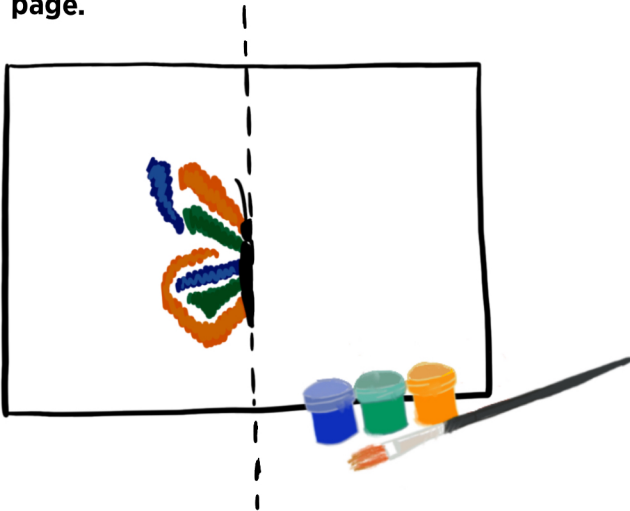
If you plan to use this for Making a Fluttering Butterfly make sure that the paper you use is not too big. Anything from 21cm x 15cm (A5) or smaller would suit nicely.



- ② Fold your sheet of paper in half and give it a nice crease. This will be your line of symmetry.

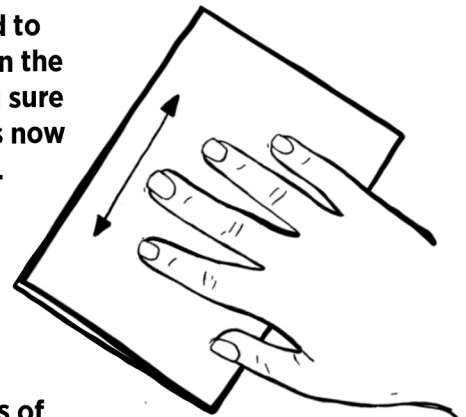


- ③ Draw your design on one side of the page.



- ④ Once your drawing is finished fold the paper over just like in Step 2.

Use your hand to press firmly on the paper making sure all the paint is now on both sides.



- ⑤ Open up your sheet of paper to reveal the symmetrical drawing you just made.



- ⑥ Try it out for different kinds of insects that you know of that also have bilateral symmetry.

Tag us @esploramalta when sharing your creations online



esplora®