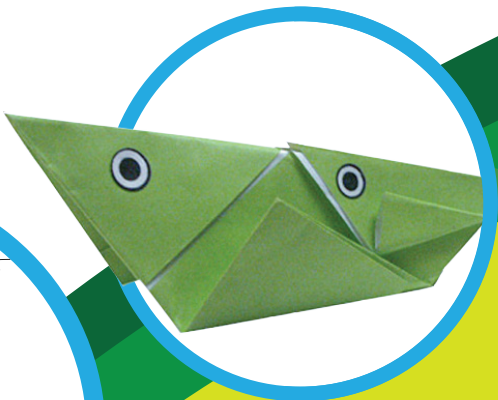


Inspiring
the next
Generation

SFERA KIDS



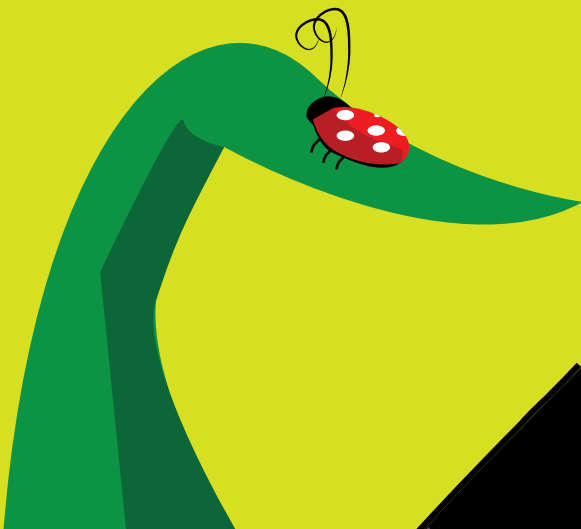
Experiments

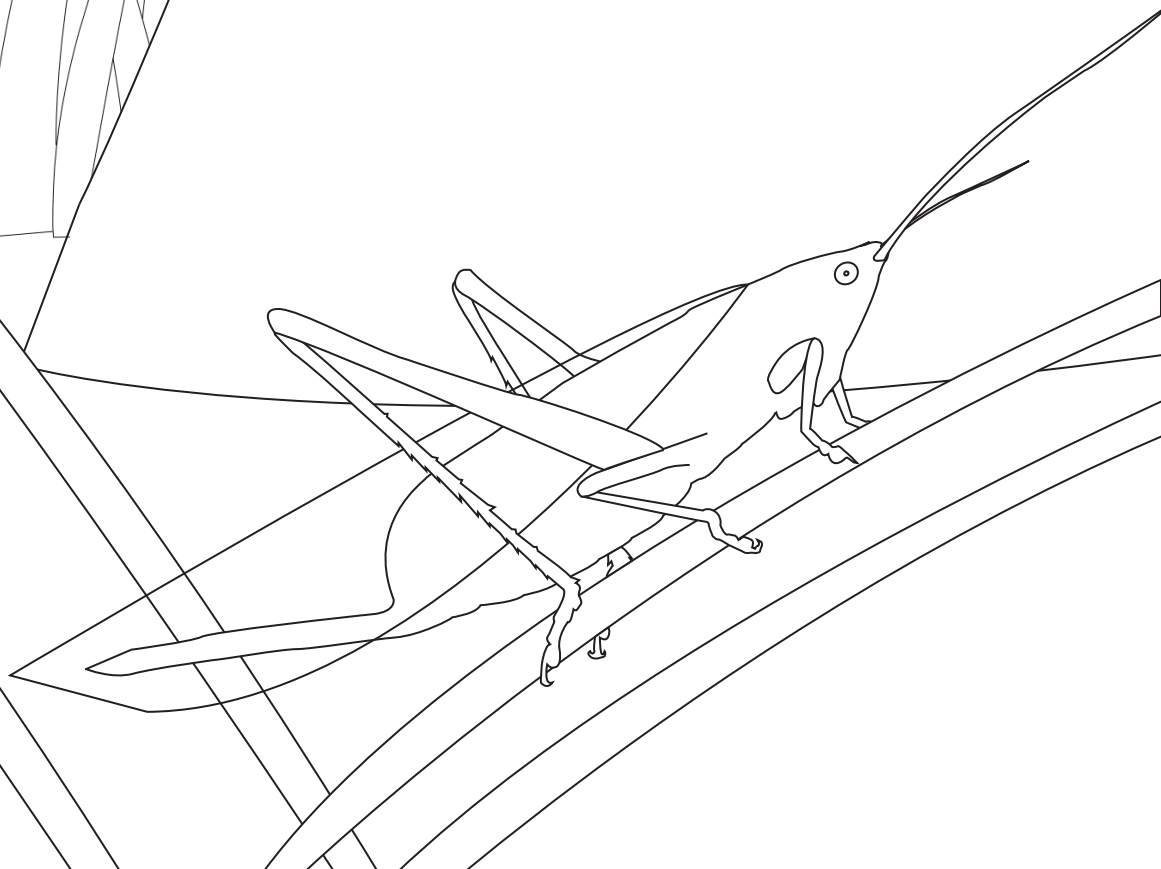
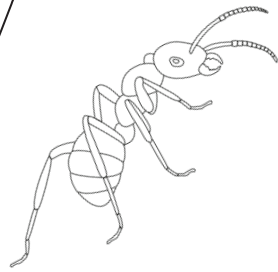


Craft



Drawing



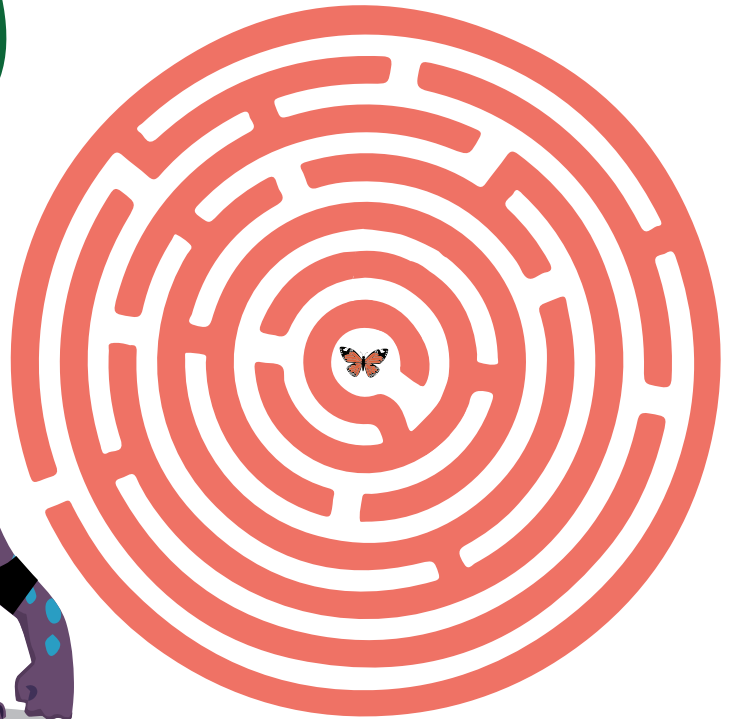


Fact!

Monarch butterflies travel as much as 100 miles a day during their 3,000-mile migration south.



Catch the butterfly!



Help Big P catch the Monarch Butterfly

Find the cost of these insects

+ + = 30

+ + = 16

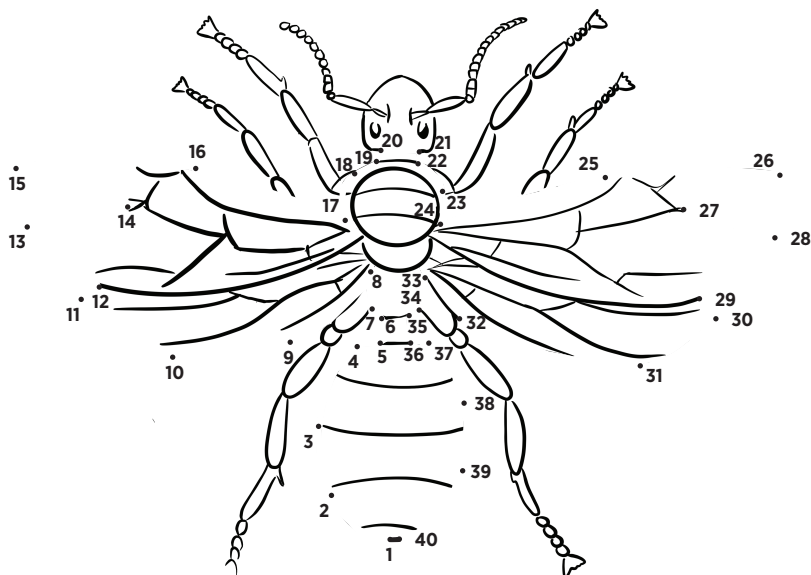
+ + = 7

= = =

Word Search

E	N	M	B	Q	I	G	S	R	M	D	L	U	G
F	D	A	E	R	N	R	E	F	Y	R	O	Y	E
L	R	N	E	E	L	A	A	Y	E	A	H	F	E
E	I	T	E	B	C	S	F	T	T	G	E	S	A
A	B	I	Y	U	R	S	R	R	E	O	I	T	N
T	Y	S	L	F	I	H	E	Y	E	N	O	L	T
T	D	O	F	C	C	O	E	R	I	F	E	I	M
T	A	O	R	A	K	P	T	T	T	L	E	S	O
O	L	O	E	H	E	P	E	N	F	Y	B	G	S
P	R	D	T	D	T	E	E	L	T	Q	E	S	Q
O	S	T	T	A	B	R	T	E	T	T	T	I	U
G	U	S	U	N	E	T	A	T	T	E	I	R	I
H	A	T	B	T	E	R	M	I	T	E	E	T	T
Y	S	S	E	S	A	B	N	Y	S	K	D	B	O

Join the dots

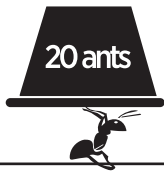


Can you find these insects?

- | | |
|-------------|----------|
| Dragonfly | Bee |
| Grasshopper | Mantis |
| Beetle | Ladybird |
| Butterfly | Mosquito |
| Flea | Cricket |
| Ant | Termite |

Fact!

An ant can lift 20 times its own body weight!



"A IS FOR ANT"

Materials:

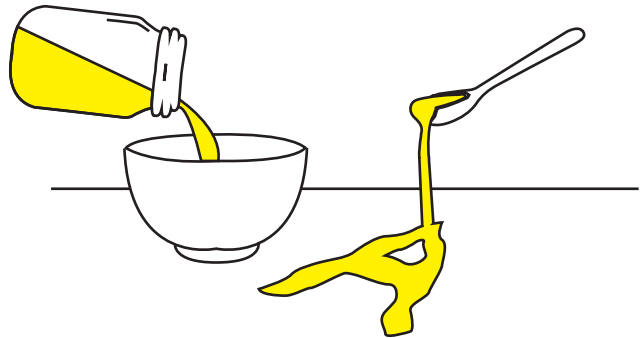
Honey
Dish
Spoon



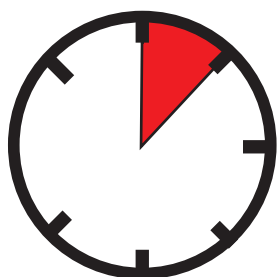
1) Find a spot where you normally find ants for example a garden.



2) Pour a little bit of honey into a dish, dip the spoon into the honey, and then write the letter 'A'.



3) Wait 5-10 minutes.



5-10 min

4) Watch as the ants eat the honey. Eventually it will disappear!



4-6 years

Adult Assistance
Needed 

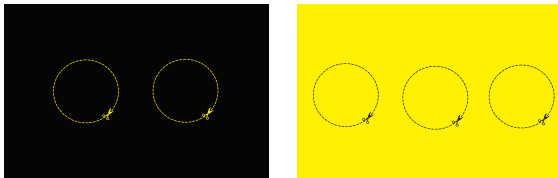
Bumblebee

pop up card

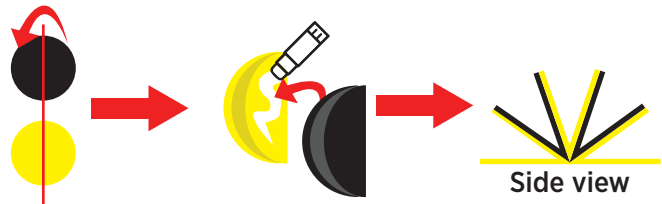
Materials:

Yellow and black paper
Paper scraps for flowers
Pen
Glue stick
Scissors
Card stock

1) To form the bee - Use something circular e.g a tin can. Trace 5 circles; 3 circles on yellow paper and 2 circles on black paper



2) To make the paper bee - Fold each paper circle in half. Add glue to one half of the circle and place the other half circle together. Glue the circles together. Make sure you alternate yellow and black circles as shown below. Don't forget to cut the below bee shapes.



3) Assembling your pop up bee card - fold the card in half and open it. Stick the folded circle at the centre. Once happy with the bee features, glue them with the folded circles in the middle of the card as shown in the below image. Once happy close the card and reopen to see the completed bee.



2 wings



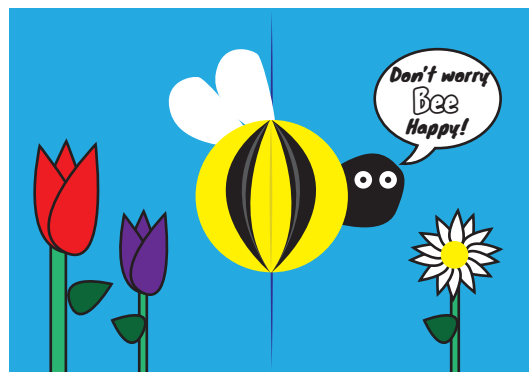
1 head



2 eyes



4) Inside the card - Decorate with flowers and you may include your text.



Fact!

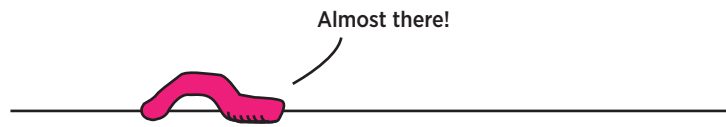
Did you know that the Maltese Honeybee is the only one of ten subspecies of honeybees in Europe?



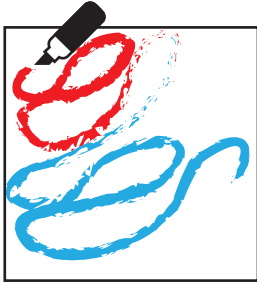
Materials:

Tissue paper
Markers
Straw
Pipette
Plate

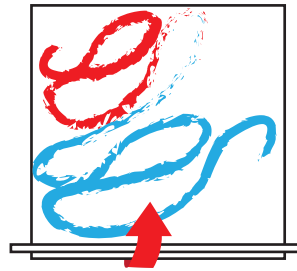
Paper Earthworm



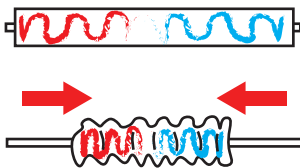
1) Use the markers to draw on the tissue paper.



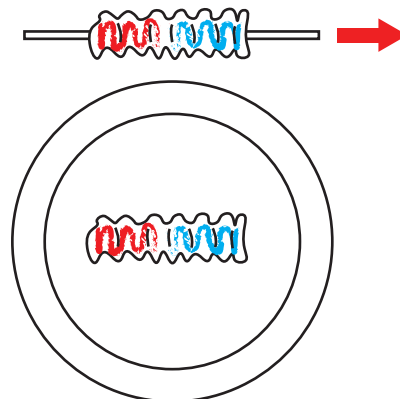
2) Place the straw on the tissue paper and roll the tissue paper along the straw.



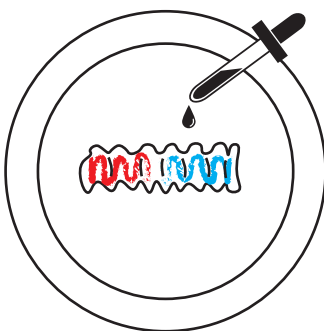
3) Once you fold the tissue paper, squish both sides together.



4) Remove the straw and place the tissue paper on a plate.



5) Use a pipette to drop water onto the folded tissue. See What happens!



Fact!

The largest earthworm ever found was in South Africa and measured 22 feet from its nose to the tip of its tail!



7-9 years



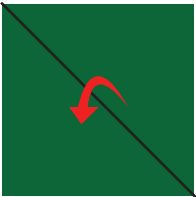
Jumping Grasshopper Origami



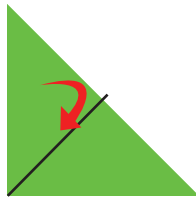
Front



Back



1) Start with the back side on top.



2) Fold the corner on the left to meet the middle corner.



3) Fold the corner on the right to meet the middle corner.



4) Turn it around and split it in half.



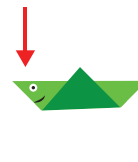
5) Flip the flap up.



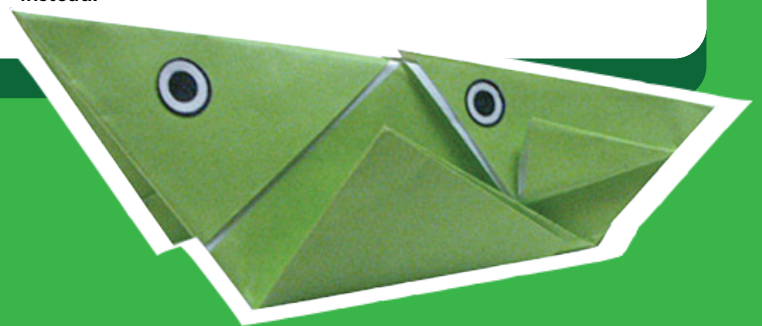
6) Do the same on the other side.



7) Grab a marker and draw the eyes and a mouth on each side or else you can use the googly eye instead.



8) Flick down the head so the grasshopper will jump.



Fact!

Grasshoppers Have Ears on Their Bellies!

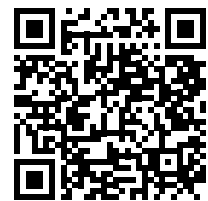
The grasshopper's auditory organs are found not on the head, but rather, on the abdomen. A pair of membranes that vibrate in response to sound waves are located one on either side of the first abdominal segment, tucked under the wings. This simple eardrum, called a tympanal organ, allows the grasshopper to hear the songs of its fellow grasshoppers.



Inspiring the next Generation

Themed science shows & activities
January to March

Scan the QR Code
for more information



Esplora Interactive Science Centre,
Villa Bighi, Marina Street, Kalkara, KKR 1320
For more information kindly call on **2360 2300**
or email on **info@esplora.org.mt**



Esplora Interactive Science Centre was part-financed by ERDF
Esplora was declared to be an emblematic project by the EU Commission.

Follow us on



esplora.org.mt 