

Discover

ESPLORA

2026





table of CONTENTS

- 1** Forewords
- 3** Education Programme
- 5** KuržitàJiem: Curiosity Drives Learning
- 6** KartaFesta: Carnival at Esplora
- 7** Easter at Esplora
- 7** Summer at Esplora
- 9** STEAM Camp: Ignite your Innovation
- 9** Maker Faire: Celebrating the Maker in Everyone
- 10** Halloween at Esplora
- 11** A STEAM Christmas
- 12** Sail-to-Science: Esplora by Sea
- 13** Find the right Esplora pass for you

- 15** A Scoop of Science
- 16** Monthly Monday Open Days
- 17** Science on Your Doorstep
- 18** XjenzAnzjan: Science Knows No Age Limit
- 19** Calm Moments, Curious Minds
- 21** The National STEAM Community Fund Returns for 2026
- 22** Building Tomorrow's Thinkers
- 22** Something Big is Taking Shape at Esplora
- 23** A Year of Awareness
- 25** Where History Meets Discovery
- 25** Turning Birthdays Into Adventure
- 27** Plan Your Next Visit: Schools, Older Adults and Summer Visits
- 27** Building Stronger Teams Through Science
- 28** The Planetarium: Your Window to the Universe
- 29** Pause the Science for a Snack
- 30** Esplora Shop: Discover Something to Take Home With You
- 32** The Collaborators Who Helped Esplora Take Shape



CLIFTON GRIMA

Minister for Education,
Sport, Youth, Research
and Innovation

Esplora's programme reflects what we value most in education: curiosity, creativity and the confidence to explore new ideas. The programme encourages students to learn through discovery, helping them build skills that stay with them for life. Strengthening STEAM education remains a priority for this government, to offer every young person the tools to navigate and shape tomorrow's world in line with Vision 2050.



SILVIO SCERRI

CEO Xjenza Malta

As Esplora marks its tenth anniversary, we're proud to see how it has become a place where curiosity genuinely takes root. Over the years, thousands of young people have discovered the joy of learning here, and this milestone reminds us how vital such spaces are for nurturing Malta's future thinkers.



**KEITH
AZZOPARDI TANTI**

Parliamentary Secretary
for Youth, Research and
Innovation

Esplora plays an important role in helping young people understand how research and innovation shape the world around them. We are engaging students early, and nurturing a mindset that values inquiry, experimentation and problem-solving. These Foundations are essential for a future workforce ready to contribute to Malta's growing innovation landscape.



MARY ANN CAUCHI

Senior Director Esplora

The programmes and facilities offered at Esplora offer tangible proof of how powerful the STEAM approach can be, opening a door for the Arts to sit alongside Science and Technology. Students learn to question, interpret and imagine through creative exploration and hands-on investigation. This marriage of disciplines strengthens understanding, ensuring young people grow into confident, adaptable and inventive thinkers.

EDUCATION PROGRAMME 2025-2026

JANUARY - JUNE | OCTOBER - DECEMBER

Esplora's 2026 Education Programme offers students a lively, hands-on break from the classroom, with a mix of workshops, science shows and Planetarium sessions that changes as the months roll by. The aim is simple: to let children explore ideas by trying things out, by asking questions, and by following their own curiosity as they move through the different spaces.

The Programme doesn't stick to one way of learning. Some activities are practical and tactile, others lean on stories or demonstrations, while many blend several approaches so that pupils can make sense of concepts in a more natural way. The Planetarium adds its own atmosphere, offering guided journeys that sit neatly alongside what students experience in the galleries.

u

Schools planning their visits for 2026 will find a programme that offers plenty of room for discovery. Bookings are open.

BOOKINGS ARE OPEN



SCAN TO
LEARN MORE





CURIOSITY DRIVES LEARNING

26 JANUARY
– 1 FEBRUARY

A key point in the year is KuržitàJiem, held at the end of January, when the centre becomes a meeting place for people working in science, technology, engineering, the arts, mathematics and related fields. Built around the simple idea that curiosity drives learning, KuržitàJiem invites young visitors to meet various researchers, scientists and artists, ask questions, and gain a clearer sense of what a future in Science, Technology, Engineering, Arts or Mathematics might look like. The annual event is designed to help children explore the world of STEAM in a hands-on, approachable way.

Across five themed days, young visitors will interact directly with professionals from local research organisations, government entities and NGOs, experiencing guided activities that reflect real projects happening in Malta. These conversations and demonstrations aim to give families a practical understanding of the diverse career paths that STEAM subjects can offer.

School groups are invited from 26 until 30 January, with the experience focused entirely on exhibitor interaction. The event continues for the public on 31 January and 1 February, with free access to the Planetarium and its interactive exhibits.

CARNIVAL AT ESPLORA

14 – 17 FEBRUARY

Carnival at Esplora brings a lively mix of colour, imagination and playful learning as we delve into the sustainable element of STEAM. Visitors arrive in their favourite costumes, tuck into traditional sweets, and dive into activities that give this festive season its unmistakable charm. This year, the team at Esplora will weave the spirit of Carnival into its shows and workshops, creating a mix of fun and discovery that feels natural and inviting, whilst celebrating local Carnival traditions and the science behind this artistry.

Families can explore how art, science, technology and engineering come together in everyday inventions. Children get the chance to experiment with simple tools and materials, try out new ideas, and enjoy the kind of tinkering that often leads to the best memories. The programme includes special science shows adapted for this fun time of year.



EASTER AT ESPLORA

6-12 APRIL

A perfect
moment for
**hands-on
discovery**

The event runs daily from 10am to 5pm, and each ticket includes all science shows and workshops and planetarium films.

Details about each workshop will be made available online.



Our Easter event invites families to explore science in a more thematic way. This Easter we will celebrate nature in a different way. We look at Earth and its natural splendour. Esplora's Easter programme offers a bright and uplifting blend of science, creativity and hands-on discovery for families. Visitors can enjoy lively science demonstrations that reveal how animals interact with their environment, how they move, and the surprising ways nature communicates. Engaging workshops invite children to experiment with light, colour and movement as they build, test and explore through play. Younger learners are welcomed into gentle, sensory-rich sessions that encourage curiosity and early scientific thinking, while older children can dive into more imaginative and expressive activities that blend art with scientific principles. Across the centre, families will find a mix of interactive shows, creative challenges and playful experiments designed to spark wonder and encourage learning together. With experiences tailored for different age groups, this Easter programme offers a warm and joyful opportunity to explore the world through science in an engaging and memorable way.

As the scholastic year wraps up, a new season of fun and learning kicks off at Esplora, with hands-on discovery, family-oriented science shows, creative workshops, 200+ interactive exhibits, and immersive experiences inside the Planetarium, all within a fully air-conditioned space.

This year's programme will continue in the summer months but in a more thematic approach. Each month introduces a new theme that allows visitors to engage in a scientific conversation, whilst allowing the flexibility to return to Esplora the following month, where they will find a new theme to explore. Activities are designed to spark imagination and curiosity among visitors of all ages, encouraging them to experiment, question and learn through play.

Each theme transforms scientific ideas into hands-on experiences; from the ever-changing climate to what once roamed on Earth 150 million years ago. Esplora will still offer the usual hands-on and interactive approach to learning, guaranteeing a summer of true discovery. Our Full Summer Education Programme 2026 will be available from our official site for a full overview of student-focused activities.

JULY - SEPTEMBER

**SUMMER
AT
ESPLORA**

STEAM CAMP IGNITE YOUR INNOVATION

AUGUST

What happens when you bring together Science, Technology, Engineering, Arts and Mathematics in a way that encourages curiosity and bold thinking? You get STEAM, an approach that places innovation at the centre of learning. At Esplora, we believe that true progress is driven not only by technical skill, but by the ability to experiment, question assumptions and connect ideas in new ways. Our STEAM Camp opens that door for every young participant.

This summer camp invites learners to tackle challenges from different angles, identify patterns, and engineer original solutions. A STEAM mindset strengthens essential 21st Century skills such as analytical thinking, collaboration and problem-solving, nurturing the innovative confidence needed to shape ideas, adapt to change, and design solutions for a rapidly evolving world.

MAKER FAIRE CELEBRATING THE MAKER IN EVERYONE

2-4 OCTOBER

Maker culture continues to gain momentum in Europe, encouraging students to explore how ideas grow. This year Maker Faire comes to Malta, the world-renowned event that brings creators, innovators and DIY enthusiasts from across the globe to Esplora.

Born from the pages of Make: magazine, Maker Faire has travelled the world for two decades, showcasing projects that blend science, technology, engineering, arts and mathematics in surprising and inventive ways. The Maltese edition will open the door for young visitors to explore interactive installations, follow live demonstrations, and meet makers working across areas such as robotics, digital fabrication, electronics, crafts, gaming, sustainable design and more. Each activity is designed to help them understand how ideas take shape and how creative problem-solving can lead to new possibilities.

1-4 NOVEMBER

HALLOWEEN AT ESPLORA

Step into a world where science meets spooky, as Esplora invites families to discover the curiosity behind Halloween traditions. This seasonal celebration offers an opportunity for hands-on exploration with themed activities, as young visitors uncover the secrets hiding behind pumpkins, shadows, illusions and all things mysterious.

Across the Centre, children will encounter interactive demonstrations and workshops that reveal the science behind popular Halloween symbols. From understanding how light and perspective create eerie illusions, to exploring the natural phenomena that inspired classic folklore, each activity encourages visitors to look a little closer, ask questions and experiment with ideas in a fun and accessible way. The experience will also introduce you to a number of activity areas with workshops, demonstrations and practical tasks.

SANTA'S STEAM FACTORY

21 DECEMBER 2026 - 6 JANUARY 2027
CLOSED ON CHRISTMAS AND NEW YEAR'S DAY

Step into Santa's STEAM Factory, a seasonal experience that offers a warm, engaging atmosphere where visitors can learn how familiar Christmas traditions are shaped by chemistry, physics, engineering and technology with a creative approach. The programme presents interactive shows, practical workshops and science on-the-spot activities designed to spark curiosity in children and adults with a wide range of events.

Hands-on workshops and a variety of activities offer anything related to the magic of Christmas and how science helps it come to life. Esplora will delve into Santa's secrets and how we can answer so many questions that come to mind during this magical season. Esplora can help visitors think creatively as we put on our elf hats and step inside Santa's Factory. Does Santa use outer space to fly faster? Can we use robots and AI to make Santa's Factory more efficient and sustainable? The possibilities for Esplora's Santa STEAM Factory are endless and ever engaging.

SAIL TO SCIENCE

ESPLORA BY SEA

Reaching Esplora Interactive Science Centre now starts with a small moment of escape. Instead of the regular commute, step aboard a brightly coloured luzzu and watch Valletta or Sliema slip quietly into the distance as your boat traces a gentle path across Grand Harbour. It is a short but rewarding trip that starts you off already immersed in a sense of exploration. Families, school groups and anyone with a curious streak get to experience the harbour from a new angle, arriving not only refreshed, but already engaged.

By the time the luzzu pulls up directly at the Centre's entrance, the journey has done exactly what it set out to do: turning the simple act of transport into something memorable in its own right, while setting the tone for the visit that follows.



SCAN TO LEARN MORE

FIND THE RIGHT ESPLORA PASS FOR YOU

A visit to Esplora can be as flexible as you need it to be, with a range of ticket options that make planning your day straightforward. Standard admission starts at €12 for adults and €10 for children and students, while little explorers up to the age of two enter for free. Concession holders benefit from reduced rates, and groups of three or more enjoy a 10% discount. You can also choose to include the Luzzu Experience, including return to Valletta or Sliema, for a minimal cost. This adds a scenic boat journey to the day. On days when it is not advisable to cross by sea, alternative land transport is provided.

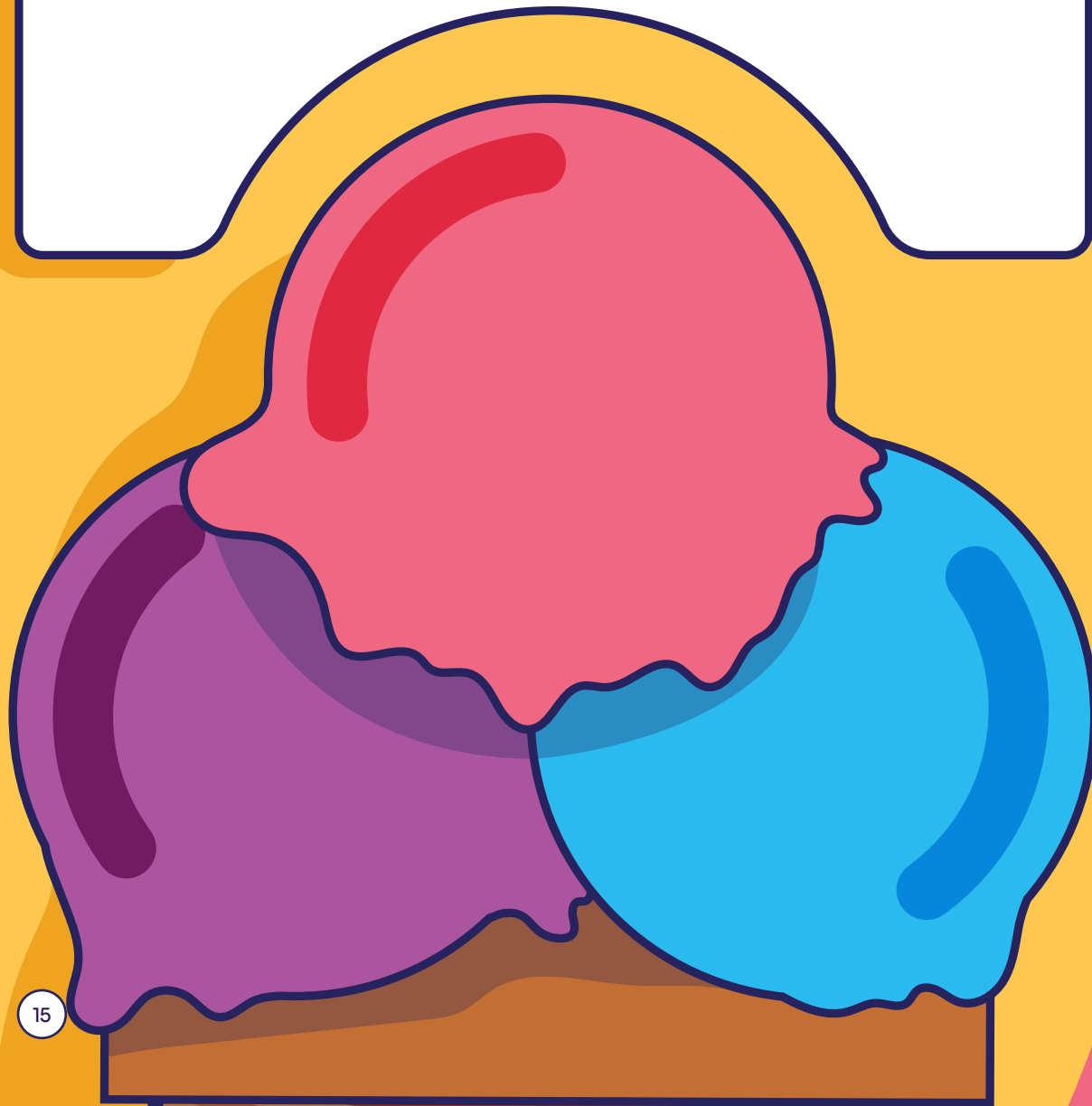
For those who love visiting over and over again, Esplora's annual memberships offer excellent value. An Individual Membership (€45) pays for itself in three visits and includes unlimited access to the main exhibition, a 10% Esplora Shop discount, and unlimited Sail-to-Science connectivity. Families can opt for the Group Membership (€125), which covers the cardholder plus three companions of any age on every visit throughout the year.

Educators can also apply for an exclusive €30 membership designed to support their work in and out of the classroom. This pass offers unlimited entry and allows up to three accompanying persons (adults, senior card holders or children) to join them on each visit at no extra cost. This is an easy way to explore and share Esplora's hands-on learning experiences all year round.



A SCOOP OF SCIENCE

The temperature may be rising, but we don't sweat it at Esplora. Not only because everywhere is comfortably air-conditioned, but also because there's an extra treat in store as your visit comes to an end. On the way out, each visitor is treated to a yummy ice-cream, adding a refreshing twist to the experience. This sweet finale follows a visit filled with hands-on activities, discoveries and lively conversations with science at the heart of it all. Science is cool in more ways than one! The offer continues until September.



MONTHLY MONDAY OPEN DAYS

Every so often, a Monday becomes the perfect moment to rediscover the joy of hands-on learning. On selected dates throughout the year, Esplora will open its doors to the public completely free of charge, inviting visitors of all ages to explore the exhibits, spark new ideas and enjoy a relaxed day out at Malta's Interactive Science Centre.

These Open Days offer a gentle nudge to start the week with curiosity. Whether you're returning to a favourite exhibit, or introducing someone to the world of science, each date offers a chance to slow down, wander through the spaces, and experience discovery at your own pace. Free entrance is available as follows:

19
JANUARY

02
FEBRUARY

23
MARCH

20
APRIL

11
MAY

15
JUNE

19
OCTOBER

23
NOVEMBER

15
DECEMBER

LOCAL COUNCIL DAY CENTRES SCIENCE ON YOUR DOORSTEP

Throughout 2026, our team will be visiting Local Council Day Centres across Malta to bring hands-on activities, friendly conversations and engaging learning experiences directly to the community. These monthly outreach sessions are designed to make science, creativity and curiosity accessible to everyone in a relaxed, welcoming environment.

JOIN US ON ANY OF THE FOLLOWING DATES:

21 JANUARY	18 FEBRUARY	18 MARCH	22 APRIL
27 MAY	24 JUNE	29 JULY	26 AUGUST
30 SEPTEMBER	28 OCTOBER	25 NOVEMBER	15 DECEMBER



XJENZANZJAN

SCIENCE KNOWS NO AGE LIMIT

Curiosity has no expiry date, and XjenzAnzjan proves it. This series of science talks invites older adults to explore ideas that shape the world around us through sessions designed to be clear, engaging and grounded in everyday experience.

Hosted inside the Planetarium Hall at Esplora, each session welcomes a leading Maltese expert who will guide participants through topics ranging from climate change and renewable energy, to artificial intelligence and the mysteries of the human mind. The talks are paced for comfort, structured to spark conversation, and created to show how science remains relevant at every stage of life.

There are several sessions to choose from and only 80 seats are available per talk, so early booking is recommended by calling on 2360 2244, or by sending an email to esplora.bookings@gov.mt.

18 FEBRUARY	11 MARCH	14 APRIL	16 APRIL
7 MAY	14 OCTOBER	12 NOVEMBER	10 DECEMBER

CALM MOMENTS, CURIOUS MINDS

Everyone's included at Esplora! Step into a calmer world of exploration with our Sensory Friendly Hours, created for visitors who prefer a gentler environment while discovering the joy of science. During these dedicated sessions, the Centre softens its lights and lowers ambient sound to offer a more comfortable space for learning and play. During these peaceful hours, families can take part in tailored workshops, enjoy relaxed science shows, and explore the Planetarium in a quieter setting.

Visitors can make use of our Sensory Bag at any time of the year. This is filled with sand timers, fidget toys, visual aids, sunglasses and ear defenders. We also support the Sunflower Scheme, with lanyards available for use at recognised locations. Sensory Friendly Hours take place as follows:



THE NATIONAL STEAM ENGAGEMENT COMMUNITY FUND RETURNS FOR 2026

The National STEAM Engagement Community Fund is back with more opportunities for those wishing to develop projects that bring STEAM to life in practical, engaging ways. The Fund supports ideas that make science a natural part of everyday learning and participation.

Eligible participants include schools, local councils, NGOs and other community groups looking to collaborate with a researcher or STEAM professional to shape projects that respond to local needs. Chosen applicants will receive 70% of their funding at the start of their project, with the remaining 30% issued upon completion and review. The final report will also contribute to the Fund's growing collection of legacy material, helping others learn from each finished project.

BUILDING TOMORROW'S THINKERS

Creating a space where education, research, industry and the arts can work side by side, the National STEAM Engagement Taskforce brings together organisations that each hold a piece of Malta's future. The Taskforce builds on Esplora's longstanding links with research, innovation, education and public engagement to encourage a more cohesive approach to the issues shaping the country's STEAM landscape. Instead of tackling these challenges separately, we now look at them collectively, examining how shared insights can lead to stronger outcomes.

The work of the Taskforce is organised across three streams:

- Skills and workforce explore how people enter, grow and adapt within STEAM careers, with a focus on key sectors such as education and healthcare;
- Public Engagement strengthens STEAM understanding and participation, encouraging people of all ages to connect with research and hands-on learning;
- Policy and Advocacy ensure that the Taskforce's insights lead to concrete action by maintaining an ongoing dialogue with decision-makers.



Visitors this year may start to notice a few covered areas and quiet sparks of activity around Esplora, indications that a new set of large exhibits is on the way. These installations are unlike anything currently on the floor. They're bigger, more physical, and are designed to pull people in through movement, sound and hands-on experimentation.

The ideas behind them have been developing for months, shaped by educators and technicians who know exactly how visitors like to explore. Some exhibits play with scale, others focus on forces and materials, and a few are simply being built because they offer a clever way to experience science without feeling like this is a lesson.

Details will be released as each area nears completion, but you can expect bolder structures, fresh themes and new ways to interact with the space.

SOMETHING BIG IS TAKING SHAPE AT ESPLORA

A YEAR OF AWARENESS

Each year at Esplora, we mark a series of important days that place equality, wellbeing and human rights at the centre of our programme. Each date is observed in a way that encourages visitors to pause, take part and learn, be it through short discussions, awareness drives, small keepsakes, or by hosting guests who share their stories and expertise.

These moments span a wide range of themes: From encouraging young girls to pursue science to recognising the role of Families and older adults, to shining a light on mental health, human rights and the impact of gender-based violence. The common thread running through all these initiatives is one: creating a space that welcomes everyone and reflects the diverse experiences within our community.



International Day of
Women & Girls in Science



Women's Day



International Family Day



World Day Against
Trafficking In Persons



Pink October



International Day Of
Older Persons



Mental Health
Awareness Day



November November



World Children's Day



International Day For
The Elimination Of Violence
Against Women



International Day of
Persons With Disability



Human Rights Day

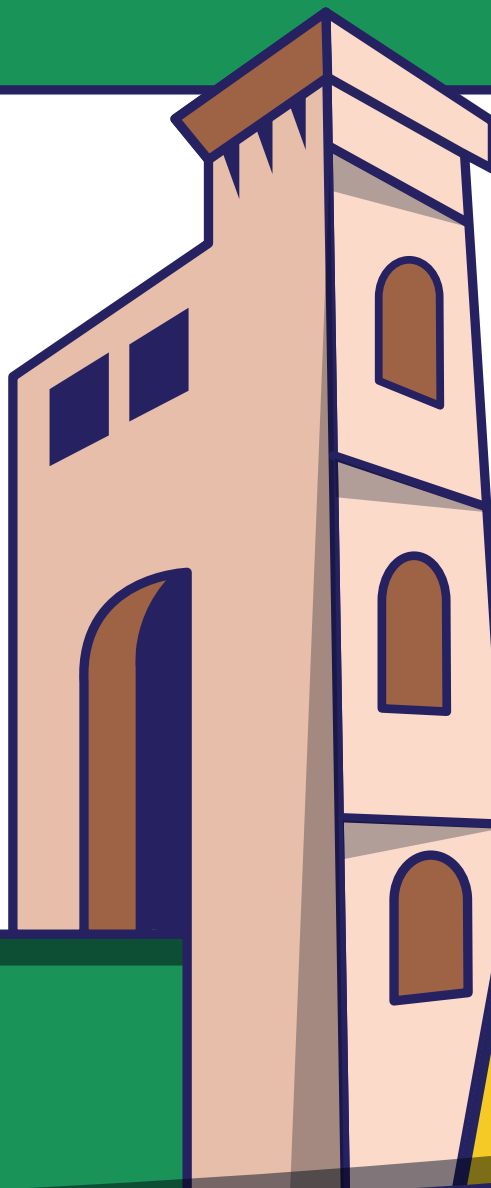
25 – 10
NOVEMBER DECEMBER

16 Days of Activism
(Domestic and Gender-Based Violence)

WHERE HISTORY MEETS DISCOVERY

Perched above Grand Harbour, the site now housing Esplora carries a story that reaches back to the 17th Century, when Villa Bighi was built as a summer residence for Fra Giovanni Bichi. It later became one of the Mediterranean's key naval hospitals, treating casualties during major conflicts, including the Crimean War and both World Wars.

Visitors can now explore this history first-hand through a series of Historical Tours. These self-led tours guide people through the old hospital wards with the help of virtual guide Nurse Watson, sharing glimpses of the nurses' routines and the traces of wartime damage still visible today. A short history gives a quick overview of how the site was transformed from private residence to naval hospital, eventually becoming a landmark in its own right. If you're interested in learning more, you can even join a guided tour to explore restored interiors, hidden spaces and the distinctive Cot Lift, which features a permanent exhibition - Life at Bighi.



Tourist Immersive Experience Package

For a complete day out, the Tourist Immersive Experience Package combines heritage, science and local flavour with private access to selected historic areas, a guided tour, a science activity of choice, a traditional lunch inclusive of a local recipe beverage and spiced Maltese coffee, with free time and flexibility to explore the Centre's exhibits.

Our Visitor Experience & Hospitality Team welcomes collaborations from tourism stakeholders, encouraging them to bring their teams over and discover what experiences their guests can witness at Esplora. For more information contact us on info@esplora.org.mt, and we can organise a visit just for you.

TURNING BIRTHDAYS INTO ADVENTURE

Esplora's EduKids Parties are designed for families who want a celebration that feels joyful, memorable and genuinely enriching. Instead of the usual party set-up, guests step straight into a world of hands-on science, where they can explore the exhibits freely and follow their curiosity from one space to the next. Throughout the visit, an Esplora Host is present to keep the flow running smoothly, and to help the group make the most of what the centre offers, without ever taking the place of parental supervision.

THE PLANETARIUM EXPERIENCE

The Planetarium Experience is one of the main highlights, as each group enjoys one chosen show along with access to the Universe Exhibition, giving young guests a chance to experience space, astronomy and imagination in a way that feels both exciting and approachable. Of course, every party needs party food, with a yummy kids' meal served to ensure that no one is running out of steam midway through the celebration. The birthday child is treated to a small gift, and every guest receives a complimentary return ticket.

Esplora is now taking bookings for school groups, summer schools and visits for older adults. If you're organising an outing and need help choosing the right set-up, our bookings officers can talk you through the options and let you know what's available on your preferred dates.

Schools, summer schools and elderly groups can get in touch on bookings@esplora.org.mt or on 2360 2299 / 2360 2258. Our team will point you to the terms and conditions for each type of visit and answer any practical questions.

PLAN YOUR NEXT VISIT

SCHOOLS, OLDER
ADULTS AND
SUMMER VISITS

BOOK NOW

BUILDING STRONGER TEAMS THROUGH SCIENCE

Esplora now offers a new team-building package for schools and colleges, giving groups a chance to step away from their usual routine and work things out together in a different setting. All activities are hands-on and slightly unexpected, aimed to get people talking, planning and figuring things out as a group.

The focus is never on who knows the most, but always on how people actually work with one another. A mix of light problem-solving and science-based tasks nudges teams to listen more closely, share ideas and make better use of whatever they have at hand. It's simple, but it works. Exercises are playful rather than competitive, with groups leaving with a clearer sense of how they function and what helps them move forward.

THE PLANETARIUM YOUR WINDOW TO THE UNIVERSE

Our Planetarium offers a vivid journey through space, wrapping visitors in a dome of stars, planets and celestial stories. The theatre is built around a 10.7 metre dome fitted with advanced 4K projection, creating an experience that feels as close as you can get to travelling through the Cosmos without leaving the ground. Each visit includes entry to a curated programme of films or live shows, along with access to the Universe Exhibition, where 13 interactive stations introduce themes ranging from cosmic structure to daily life beyond Earth.

Screenings are fully immersive, thanks to reclining seats and full soundproofing. Check the weekly schedule on arrival at the Esplora reception before making your way to the dedicated Planetarium building. Doors open 20 minutes before each show and close on time to preserve the experience, so early arrival is encouraged.

Accessibility is a key part of the design. A hearing loop system is installed across rows two to five, allowing visitors using hearing aids in Telecoil mode to receive a clear, direct audio signal.

PAUSE THE SCIENCE FOR A SNACK

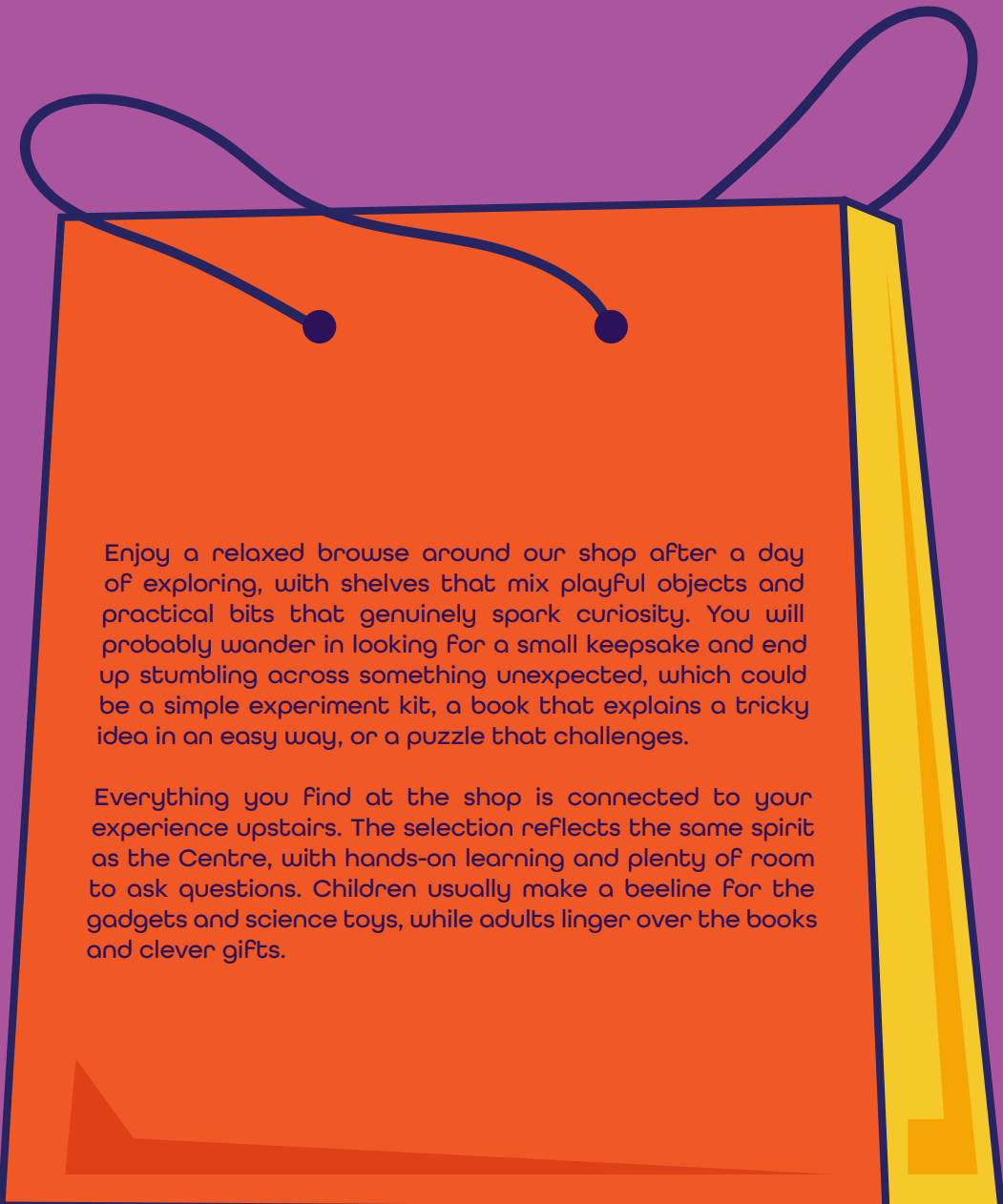


Nestled between the elegant Villa Bighi and the majestic Grand Harbour, EsploraCafé offers a quiet corner to pause and regroup. The menu is classic, and you can enjoy a quick bite, a slice of cake or just coffees and drinks. It's just as easy to pick up a little something to eat, as it is to sit for a few minutes and enjoy the view.

The kitchen is used to handling different requests, and most dishes can be adjusted without fuss. If you prefer a burger without cheese or want an ingredient left out of your pizza, the staff can sort it out. They also work around common allergies and intolerances, from gluten and lactose to nuts, shellfish, soy, fish, eggs and corn. Vegetarian and vegan choices are also available. Anyone with specific needs is encouraged to mention them when booking, so that the team can prepare properly. It's important to keep in mind that, while the café does its best to avoid cross-contact, it doesn't run a separate allergen-free kitchen.

ESPLORA SHOP

**DISCOVER SOMETHING
TO TAKE HOME WITH YOU**



Enjoy a relaxed browse around our shop after a day of exploring, with shelves that mix playful objects and practical bits that genuinely spark curiosity. You will probably wander in looking for a small keepsake and end up stumbling across something unexpected, which could be a simple experiment kit, a book that explains a tricky idea in an easy way, or a puzzle that challenges.

Everything you find at the shop is connected to your experience upstairs. The selection reflects the same spirit as the Centre, with hands-on learning and plenty of room to ask questions. Children usually make a beeline for the gadgets and science toys, while adults linger over the books and clever gifts.



THE COLLABORATORS

WHO HELPED ESPLORA TAKE SHAPE

Esplora has grown through the steady support of the organisations and people who believed in the idea long before the doors opened. The shift from the old Royal Navy Hospital Bighi to a national science centre demanded input from many corners of the public sector, and we remain grateful for every contribution along the way.

Our team has carried out invaluable work when creating content for shows, exhibitions and experiences which can be enjoyed today, helping foster a sense of community, especially among regular visitors and families. Each member and collaborator has left a mark on Esplora's story, and we remain appreciative of the support that continues to guide the Centre forward.





MONDAY - FRIDAY

9am - 3pm

esplora.org.mt

WEEKENDS / PUBLIC HOLIDAYS

10am - 5pm

